

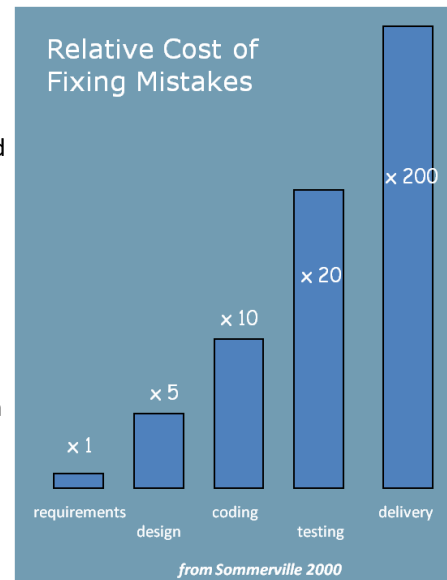
Automated Code Certification System

Overview

Q-Care is an automated solution for the static analysis of source code against a set of defined rules. These rules describe coding guidelines and best practices, designed to ensure good quality code and take advantage of significant benefits that accompany it.

A common idea is that projects cannot be successful without some compromise on at least one of cost, duration and quality. In software engineering, compromising on quality from an early stage can lead to significant cost increases later on in the process as can be seen from this report from Sommerville.

With Q-Care, one can overcome this compromise. Development productivity can increase, leading to faster time-to-market for new software. Relative costs reduce as a result. Code quality is ensured from the earliest possible stage in coding, leading to even more benefits during maintenance.



Featured Benefits

Faster Production

With Q-Care integrated directly into the software process, developers can make use of it as soon as they start writing code. The satisfaction of quality requirements from an early stage saves time later through less time in testing and cleaning up of code. Q-Care's automated process also executes a certification in almost no time at all.

Reduce Maintenance Costs

Good quality code can lead to a significant saving in application maintenance costs. Code is easier to read, is better structured and has also been optimized to avoid defects where possible (for example using incorrect types as a quick workaround).

Extensible and Customizable Rule Libraries

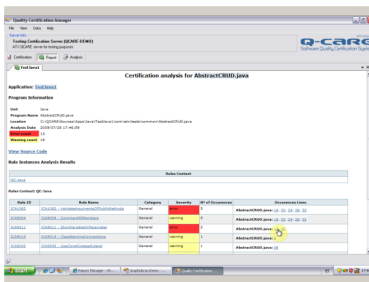
Q-Care uses libraries of quality rules, where there exists one library per language. Each certification project can have its own set of parameters for the rules. Rules can be added, removed and modified easily by the client.

A Rich Set of Features

Language Support

Q-Care supports a range of languages already from different dialects of COBOL to C#, Java and SQL. This means that Q-Care can be applied to almost all languages used in the development process, applying its benefits to all.

Q-Care's extensible nature means that supporting other languages is straightforward and ATX can provide extra support as required for new languages and updates to current languages.

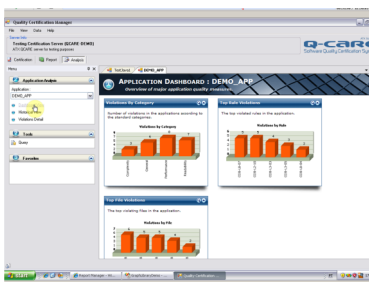


Detailed Analysis Reports

Q-Care can provide a choice of results delivery. If the certification has been invoked from an IDE, then the results can be a simple list of violations, similar to compilation. Otherwise, a fully detailed report can be generated included descriptions of each rule, number of violations and even the location of each violation.

Collect Metrics

Quality rules are not limited to those with correct/incorrect results. Metric quality rules can deliver the number of occurrences of a given pattern, whether good or bad. Metrics are a good means of measuring the software process, to detect weak spots and to track the effect of change.



Development Intelligence

Development intelligence helps project managers improve software development processes in the same way that Business Intelligence provides crucial information about business activities. Q-Care can store all certification results in a database, enabling managers to get a snapshot view of development quality at any given time. This can highlight the most common vulnerabilities and provide evidence when process changes need to be measured.

Unlimited Capability

ATX can also offer a customization service for Q-Care, to ensure it fully meets each customer's needs. One example is an automatic reengineering module safely transforms bad coding patterns to correct ones. Other examples can include Web Service deployment and integration with a configuration management system.

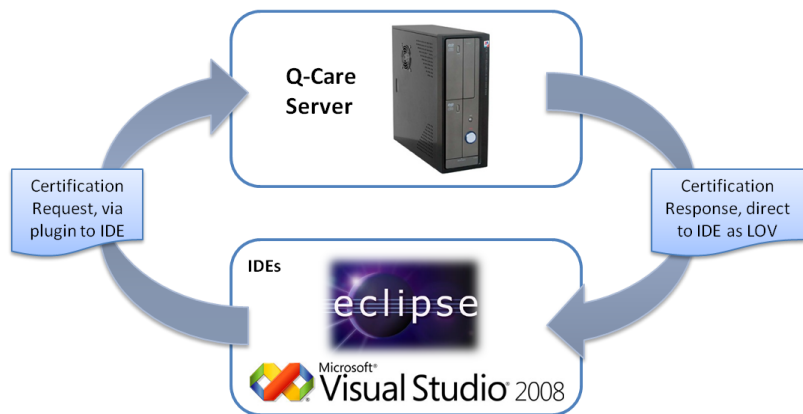
A Range of Deployment Options

Q-Care is a solution designed to fit with any software development process. It provides different deployment options and an unrivalled set of valuable features.

Distributed

Q-Care can be installed as a local service, permitting direct access with plug-ins available for the most common development environments. This way, a developer has immediate access to Q-Care's facilities, including its reporting functionality.

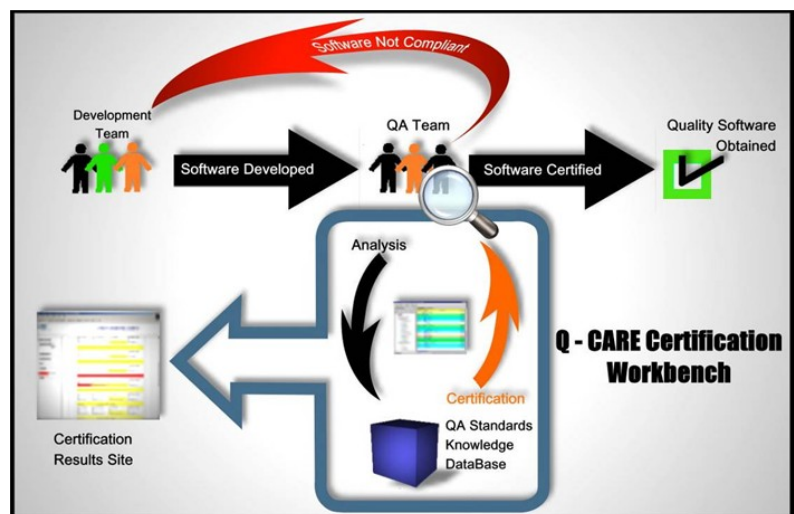
This distributed model is designed to provide maximum benefit from the earliest possible stage in software development. Developers themselves can create their own custom rule libraries and their own set of parameters, adding to the flexibility that Q-Care already boasts.



Centralized

Q-Care can be made available to a centralized Quality Assurance team, to supplement standard functional and non-functional testing procedures.

Q-Care is deployed on a central server, with access available through its workbench program. Certification results can be stored in a configured database, providing management with records of all certification processes and the quality status of all project code at any particular time. These can be used to determine improvements to the software process and to check for the rules most commonly violated.





Company Profile

ATX Technologies Ltd provides innovative and powerful solutions as well as a comprehensive set of services for companies and organizations that wish to modernize their software applications or improve their development process and software infrastructure. Our mission is to help our clients survive and grow in the turbulent markets of today by relying on IT systems that are agile in responding to business and technological changes, and can maximise efficiency across organisational structures.

Our mother company - ATX Software SA - has been in operation since 1996, when a team of young graduates decided to channel their creativity to the development of cutting-edge software engineering tools. During this period, we have built a wide portfolio of clients in the public and private sectors, both nationally and internationally, who have been using our services and solutions (often in more than one occasion) with improved results in cost effectiveness, productivity, quality and performance.

One of the main keys to our success is the degree of technological innovation and specialization that we have achieved. Our investment in R&D has been paramount for developing technology that is both cost effective and highly innovative. The fact that we have been full partners of several European research projects and networks has allowed us to remain at the cutting edge end of IT and be competitive in what is a very fierce market.

Our partnership with the University of Leicester (initially sponsored by the European Commission) has given us the opportunity to engage with - and recruit from - a highly qualified pool of people. We take pride in having put together a flexible, multinational team of top professionals, which has allowed us to adjust to - and cope with - different project scales and market needs.

These factors are key to our ability to deliver the highest possible return to our customers and we are committed to developing and expanding them further.

For more information, please go to www.atxtechnologies.co.uk.

Contact:

W: www.atxtechnologies.co.uk
E: info@atxtechnologies.co.uk

Locations:

ATX Technologies Ltd
Dept Computer Science
University of Leicester
University Road
Leicester LE1 7RH
United Kingdom
T: +44 (0) 116 223 1368
F: +44 (0) 116 252 3915

ATX Software SA
Rua Saraiva de Carvalho 207C
1350-300 Lisboa
Portugal
T: +351 210 120 500
F: +351 210 120 555

ATX Software
Calle Belfast 13 4 5C
28022 Madrid
Espana
T: (+34) 622 721 964