

ATX TECHNOLOGIES

# Access2net

Migration Services



*Transform Access Applications and Databases to Enterprise-level Systems using .NET and SQL Server.*

## Overview

Access2Net is a tool for the automated conversion of Microsoft Access application components (forms, macros and modules) to .NET technology:

- Minimizing time, cost and effort of the migration process;
- Reducing software maintenance costs;
- Preserving original functionality.

## Why Migrate?

Many companies are looking for strategies and tools to migrate from Microsoft Access to a more powerful environment, such as .NET.

The reasons for this interest vary, but include:

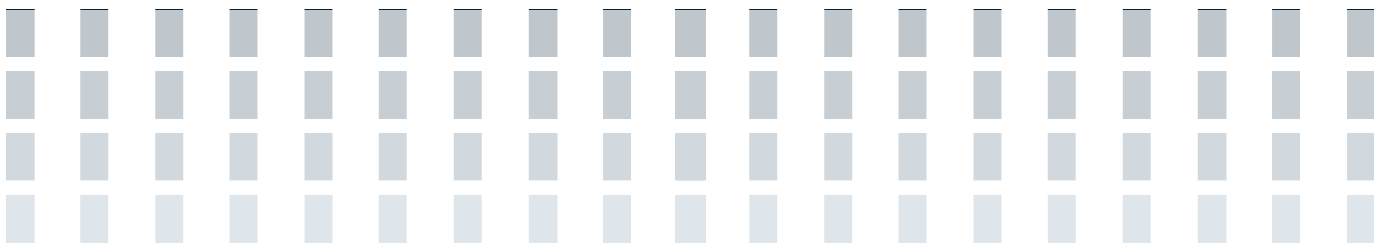
- Improve security and secure important data;
- Increase development potential;
- Increase performance and break through storage limitations;
- Achieve Enterprise deployment capability and scalability;
- Platform standardization;
- Customer/partner alignment;
- Administrative or political decisions.

## At What Cost?

The cost of a migration process depends on several characteristics of the original system, such as:

- Application size;
- Complexity of components;
- Behaviour patterns to migrate.

**Access2Net Analyzer** is an auxiliary tool that is provided for free to potential customers. It allows users to gather statistical information from their current source code in order to estimate the time and effort required for the migration process.





## The Scope of Access2Net

Access2Net is targeted at the application layer only. Migration of data and reports is possible through the SSMA tool from Microsoft.

**Access2Net Converter** converts Microsoft Access Forms and modules to a target .NET solution, in 100% pure .NET code.

Access2Net has the following features:

- Supports Microsoft Access mdb files, compatible with Access 2003;
- Generates up to 100% of the final application's code;
- Generates either C# or VB.NET code;
- Generates a choice of target platform;
- Generates database-independent code.

## Mind the gap!

All migration techniques have to address the semantic gap that separates the original from the target environment.

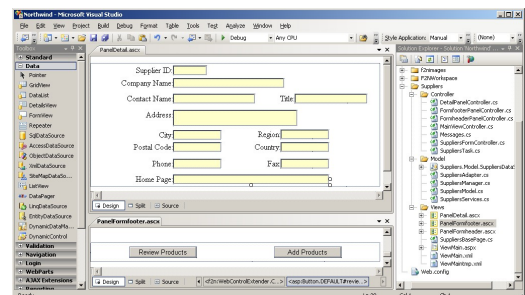
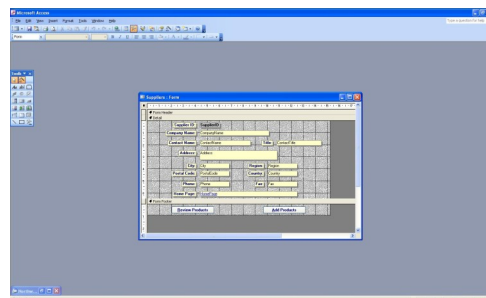
Access2Net incorporates a sophisticated

reengineering approach whereby code structures are identified and transformed into the desired target using the MVC architectural pattern. This powerful feature provides 3 major advantages over a 1-1 syntactic mapping:

1. A greater percentage of the source code is automatically converted;
2. The resulting architecture enables easier maintenance and evolution;
3. The resulting code complies with Microsoft best practices.

Access2Net offers a significant reduction of effort and costs over a manual migration process.

The output of Access2Net is a full Microsoft Visual Studio solution. Development teams can fine tune or evolve the migrated application using all the functionality of this environment.



## Architectural Optimization

The application's design is organized according to the industry-accepted Model-View-Controller (MVC) architectural pattern, in order to minimize interdependencies amongst different parts.

### Model

- Maintains and manages the information manipulated by the form.
- Manages the communication with the database, using Datasets to store the data.

### View

- Visualization of the model state;
- Responsible for the user interaction.

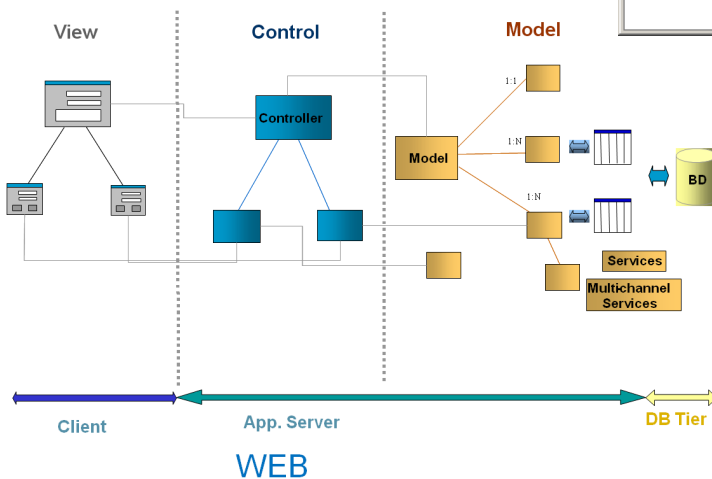
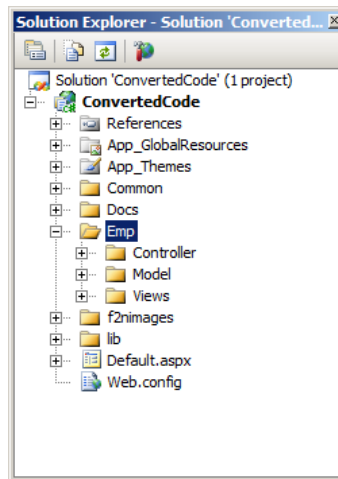
### Controller

- Responsible for the relation and coordination between the Model and View components, in addition to the form's functional interface;

- Manages user interactions, mapping user actions and events into application responses;
- Translates the actions within the View to actions performed on the Model.

Access2Net complements the SQL Server Migration Assistant tool from Microsoft.

This tool is capable of automatically migrating Microsoft Access database components (e.g. tables) to SQL Server. In addition, SSMA is capable of converting Microsoft Access Reports to SQL Server Reporting Services. For more information on SSMA, please go to <http://www.microsoft.com/Sqlserver/2005/en/us/migration-access.aspx>.



## Company Profile



**ATX Technologies Ltd** provides innovative and powerful solutions as well as a comprehensive set of services for companies and organizations that wish to modernize their software applications or improve their development process and software infrastructure. Our mission is to help our clients survive and grow in the turbulent markets of today by relying on IT systems that are agile in responding to business and technological changes, and can maximise efficiency across organisational structures.

Our mother company - ATX Software - has been in operation since 1996, when a team of young graduates decided to channel their creativity to the development of cutting-edge software engineering tools. During this period, we have built a wide portfolio of clients in the public and private sectors, both nationally and internationally, who have been using our services and solutions (often in more than one occasion) with improved results in cost effectiveness, productivity, quality and performance.

One of the main keys to our success is the degree of technological innovation

and specialization that we have achieved. Our investment in R&D has been paramount for developing technology that is both cost effective and highly innovative. The fact that we have been full partners of several European research projects and networks has allowed us to remain at the cutting edge end of IT and be competitive in what is a very fierce market.

Our partnership with the University of Leicester (initially sponsored by the European Commission) has given us the opportunity to engage with - and recruit from - a highly qualified pool of people. We take pride in having put together a flexible, multinational team of top professionals, which has allowed us to adjust to - and cope with - different project scales and market needs.

These factors are key to our ability to deliver the highest possible return to our customers and we are committed to developing and expanding them further.

For more information, please go to [www.atxtechnologies.co.uk](http://www.atxtechnologies.co.uk).



### Contact:

W: [www.atxtechnologies.co.uk](http://www.atxtechnologies.co.uk)  
E: [info@atxtechnologies.co.uk](mailto:info@atxtechnologies.co.uk)

### Locations:

ATX Technologies Ltd  
Dept Computer Science  
University of Leicester  
University Road  
Leicester LE1 7RH  
United Kingdom  
T: +44 (0) 116 223 1368  
F: +44 (0) 116 252 3915

ATX Software SA  
Av. 5 de Outubro, 146 – 9  
1050-061 Lisboa  
Portugal  
T: +351 210 120 500  
F: +351 210 120 555

ATX Software  
Calle Belfast 13 4-5C  
28022 Madrid  
Espana  
T: (+34) 622 721 964